

BEFORE YOU BEGIN

All information is based on the latest product information available at the time of publication, Kohler Co. reserves the right to make changes to product characteristics, packaging, or availability at any time without notice. Please deliver these instructions for the consumer. They contain important installation, maintenance and cleaning information.

NOTES:

1. Flush the water supply pipes thoroughly to remove debris. Faucet is designed for tap water or potable water.
2. Handle the faucet with care to avoid damaged.
3. Do not damage the surface of sensing window when installing or cleaning the faucet.
4. For new installations, install the faucet and drain to the lavatory before installing the lavatory.
5. DC type faucets, please pay special attention to insert direction matches battery poles. Tighten the battery cover completely to prevent its exposure to moisture.
6. Only install a maximum of two faucets to one DC transformer.
7. Ensure electrical source is fitted with a suitable fuse to protect DC transformer unit from damage.
8. Do not put the faucet near strong ultraviolet or electromagnetic field.
9. To ensure faucet proper operation, please install connectors.
10. For faucet with temperature mixer, please turn off valve before connecting to hot water to avoid scalding.
11. Cover the sensing window with black tape when repairing lavatories.
12. Turn off the electrical source and shut down water supply before servicing faucet.

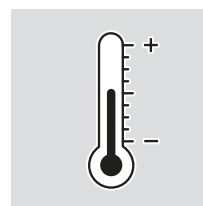
TECHNICAL SPECIFICATION

Model	18656IN-ND-**/ 72867IN-ND-**
Power	DC 4 pieces of AA size alkaline batteries
Sensor Duration	Less than 0.5s
Shut-off Delay:	0.5~1s
Sensing Distance:	Automatic adjustment
Flow Rate:	No more than 2.0L/min at 3 Bar.
Overtime Flowing Control:	Automatically stop flushing when the faucet senses an object for more than 1 minute continuously
Ambient Temperature:	1°-55° C
Supply Water Temperature:	0.5°-71° C
Supply Water Pressure:	0.5 - 8.6 Bar

PRESSURE & HOT INLET TEMPERATURE

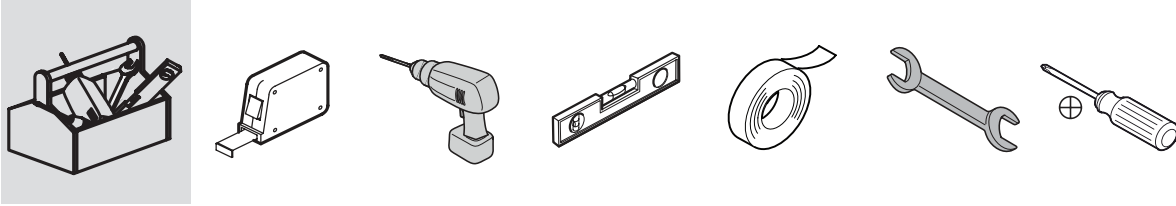


P (BAR) 0.5 < 3 < 5.5

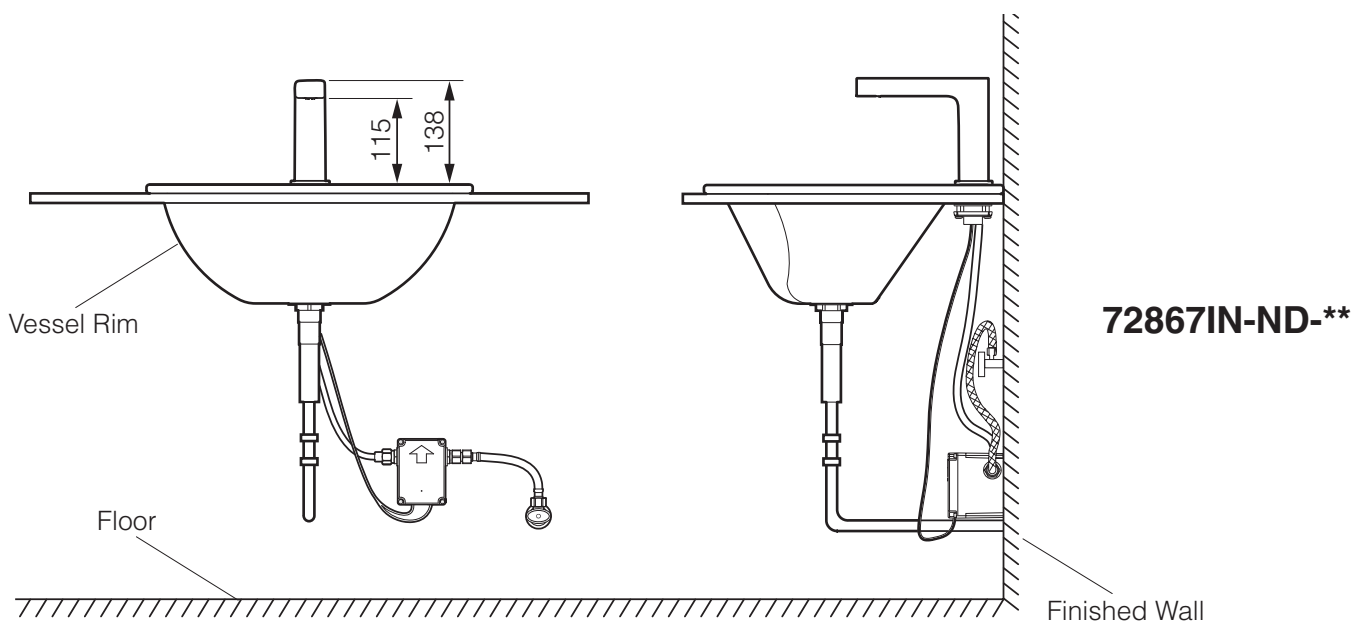
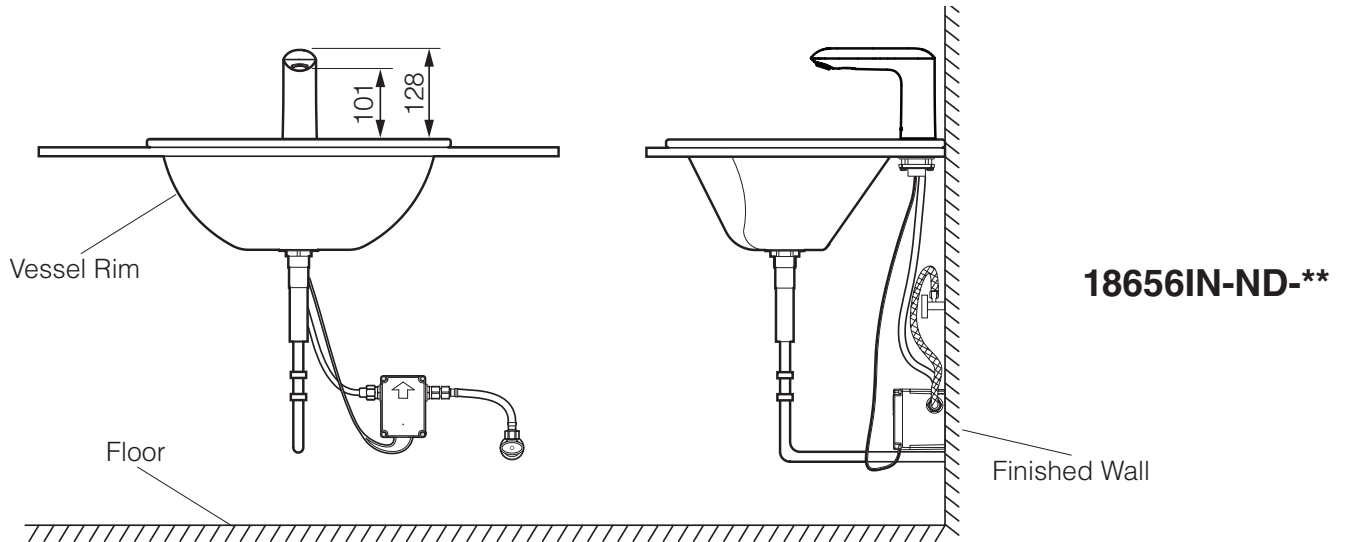


T (°C) <65

TOOLS REQUIRED

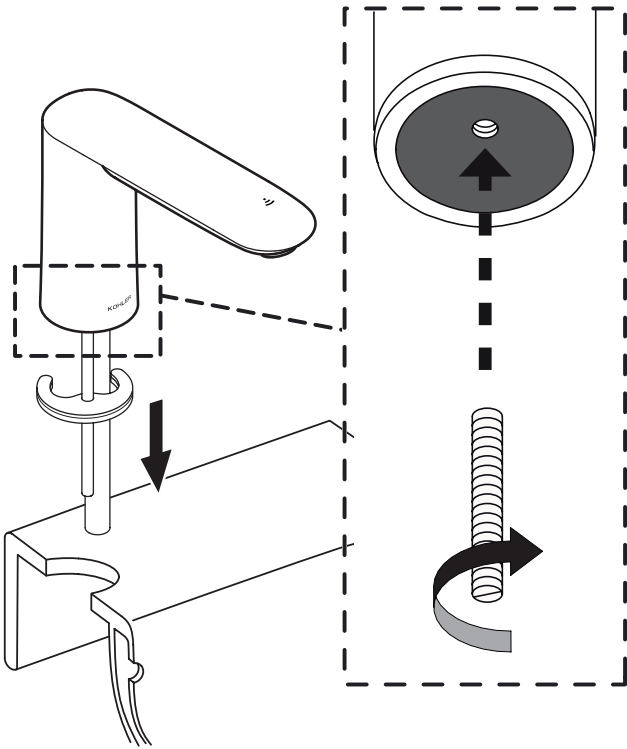


ROUGH-IN DIMENSIONS (in mm)

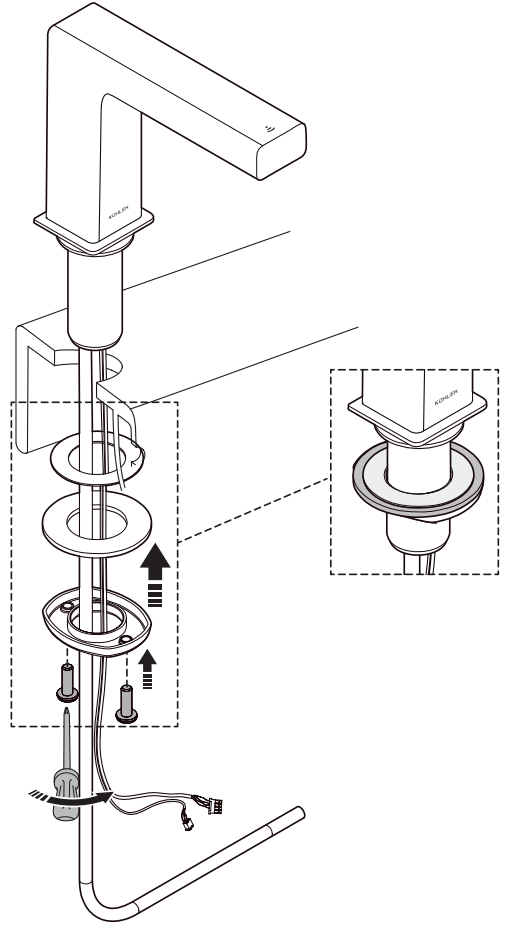


INSTALLATION INSTRUCTION

1

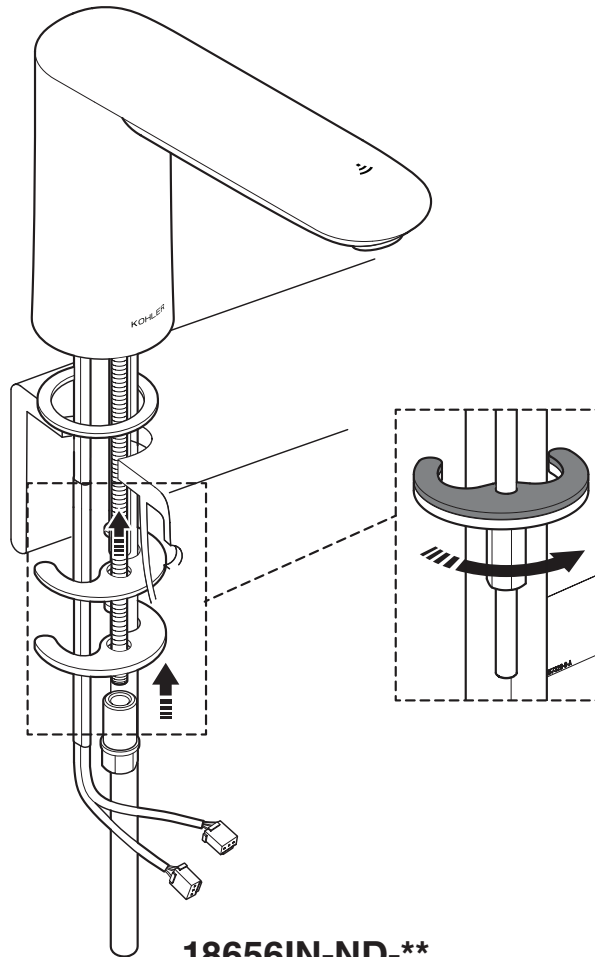


18656IN-ND-**

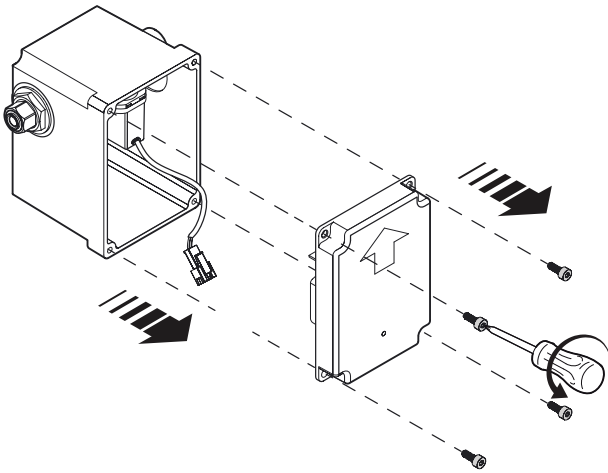
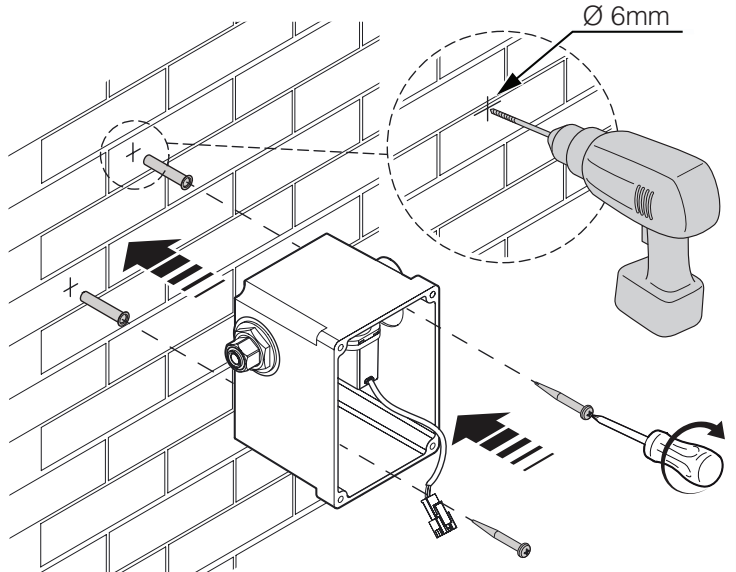
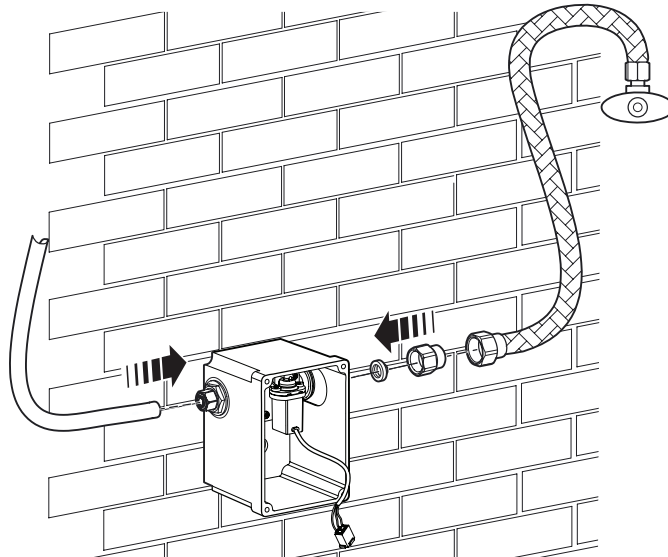


72867IN-ND-**

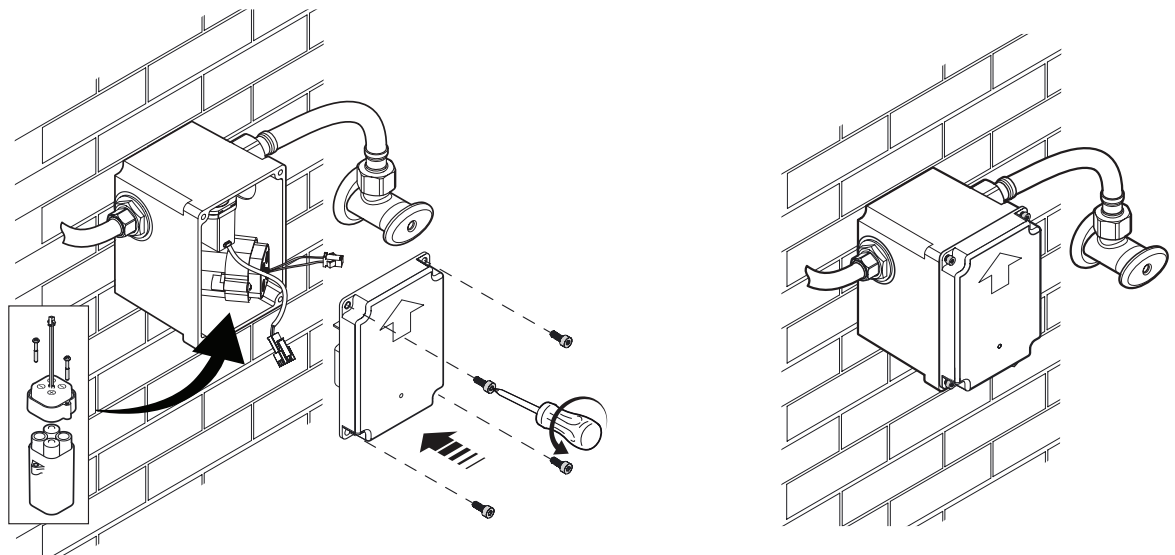
2



18656IN-ND-**

3**4****5****6**

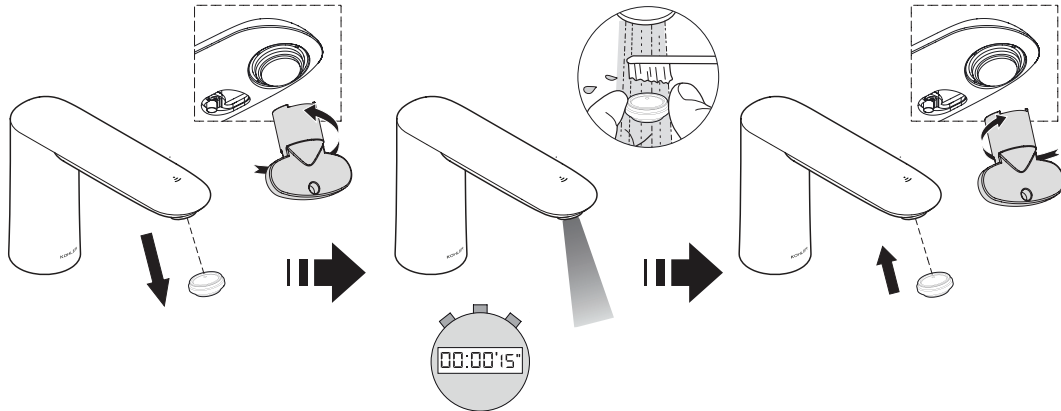
Connect the power cord with corresponding color wires, then place battery box assembly to empty space within control assembly then fasten control box by screws based on installation direction.



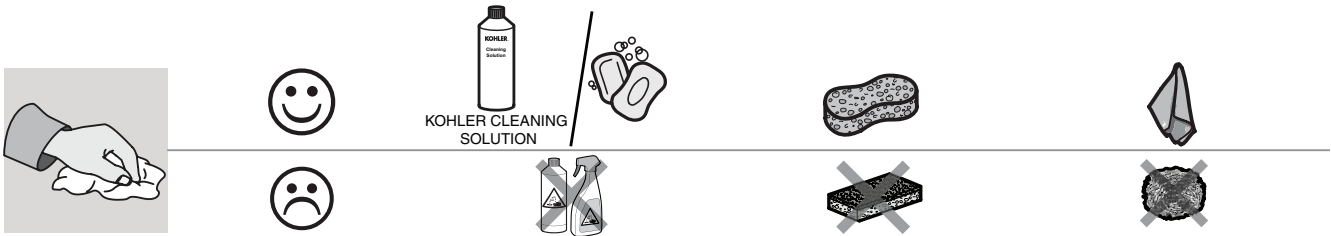
INSTALLATION CHECKLIST

Check and ensure that all connections are tight. Open the drain. Turn on main water supply and check for leaks. Repair leakage when necessary.

AERATOR CLEANING AND SERVICING



CLEANING INSTRUCTIONS

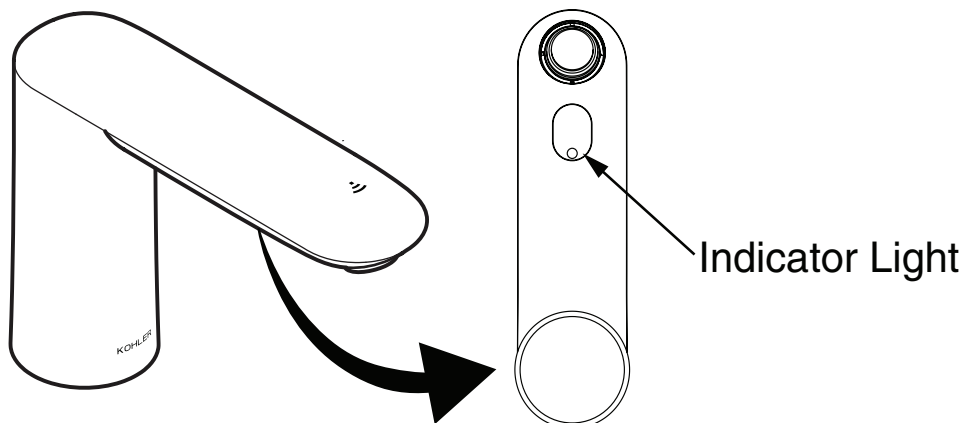


IMPORTANT CONSUMER INFORMATION

1. Light indicator Key

The indicator is the only and effective way to learn the faucets working conditions. So the users can use the sensor faucet correctly with knowing the meaning of the sensor indicator's flashing.

- The indicator flashes every 6 seconds (DC type) indicates that the unit is out of battery and has stopped working. Release batteries.
- The indicator flashes every 2s: as for DC type faucets, this indicates the unit is out of battery and ceases working. Please replace batteries.
- Under normal condition, the water will flow and the indicator will flash once when objects are detected. (The indicator does not flash when faucet stops flowing).



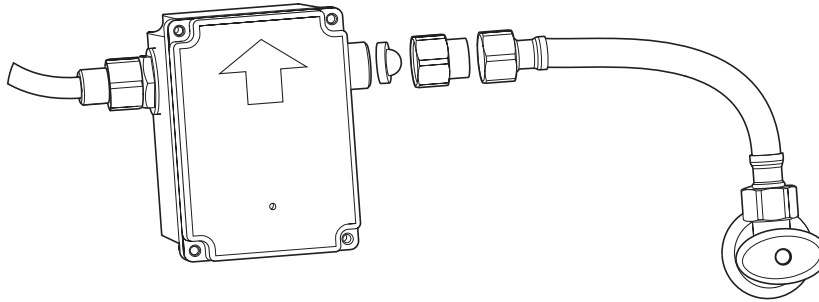
2. Timeout setting

When the faucet flows continuously for 1 minute, the faucet will automatically stop. Objects must be removed from the sensing range. Then the water will flow when objects re-enter into the sensing range again. Otherwise, the faucet will not work.

3. Clean the Filtration System

The touch-less faucet control assembly include filtration device. Poor water outflow shall be caused by excessive impurities inside the hose or poor water quality after long time use. Please clean filtration device per following steps:

- Turn off stop valve.
- Pull hose from control assembly water inlet, take filter screen assembly out. Reinstall screen after clean by water.



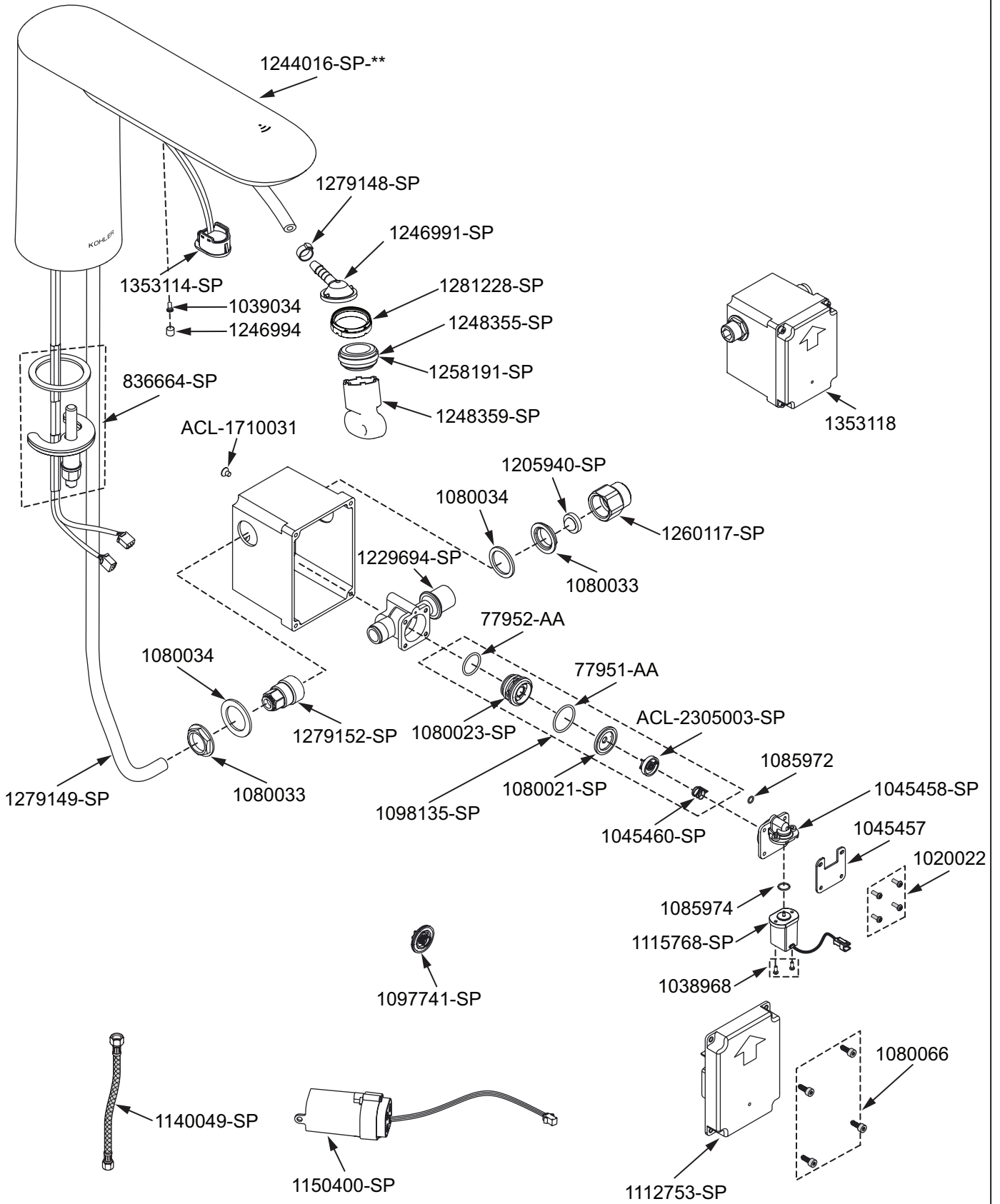
TROUBLE SHOOTING

Some trouble symptoms can be identified by the indicator's flashing. (Refer to "Light Indicator Key")

SYMPTOMS	PROBABLE CAUSES	CORRECTIVE ACTION
No water flow (Indicator not flashing)	Battery not available. Battery installed in reversed position. Other object in sensing range. Dirt on the sensing window. The connector does not connected well.	Check the batteries. Remove the object. Clean the sensing window. Check the connector.
The indicator flashes once every 2 seconds with no water flow.	Batteries are out of power.	Replace batteries.
No water flow while the indicator flashes	The stop valve is closed. The filter is blocked. The Aerator is blocked.	Open the angle valve. Clean filter. Clean aerator.
Low water flow while the indicator does not flash	The stop valve is not open completely The Aerator is blocked The filter is blocked The supply water pressure is low	Open the angle valve Clean aerator Clean filter Check the water supply system
Water runs for longer than 1 minute without switching off.	Object in sensing range.	Remove object.

SERVICE PARTS

18656IN-ND-**



SERVICE PARTS

72867IN-ND-**

